

Grid-Interactive Electric Thermal Storage (GETS) Space & Water Heating

“Smart” domestic Space and Water Heaters provide affordable energy storage and grid control for ancillary value, renewable integration and other grid optimization

Prepared by: Paul Steffes, P.E.

Steffes Corporation ♦ 3050 Hwy 22 N ♦ Dickinson, ND 58601

Phone: 701-483-5400 ♦ Fax: 701-456-7497

psteffes@steffes.com ♦ www.steffes.com/offpeak

INTRODUCTION

Utilities have long been faced with the challenge of balancing electric generation with consumer demand. Typically generation is varied to bring grid balance and stability. The introduction of increasing amounts of variable renewable generation increases our need for grid balancing resources. Affordable and effective energy storage is very beneficial to utilities, consumers, and the grid for balancing supply and demand in “Real Time” and to maintain power grid stability. Today there is another cost effective demand side balancing option that brings significant economic and environmental benefit.

Grid-interactive Electric Thermal Storage (GETS) is a low cost and very effective means of providing balancing services. Combining grid-interactive communication and controls with electric thermal storage space and water heaters makes up the GETS system. This grid-interactive technology can interface with standard load management systems or other smart grid signals to provide very responsive regulation and valuable power management. When considering all stakeholders, the universal mission of GETS systems is to be a precise, dependable, predictable and verifiable “Up” and “Down” dispatchable load. GETS systems can be used to reduce load or **store extra amounts** of energy as needed to help manage the power system while balancing the needs of the consumer, utility, and electric grid. In order to achieve this, GETS systems:

- monitor the needs of the consumer and insure they are met
- periodically report the amount of UP or DOWN dispatchable load that they can provide for a period of time into the future which can then be aggregated with other similar devices

- respond to signals and provide “Up” and “Down” dispatchable load as needed by the grid and verification that they did what they were asked to do

This distributive electric storage technology serves as a low-cost, long-life “Thermal Battery” and is a powerful and valuable economic and environmental resource.

GETS systems are fast acting energy storage resources which provide many benefits to utilities, the electric grid and society. GETS systems help:

- 1) **Maintain balance, stability and reliability of the electric grid.**
- 2) **Improve system efficiency and environmental value**
- 3) **Integrate variable renewable generation resources**
- 4) **Bring Economic Value – Regulation services, LMP and other optimization**

WHAT IS GETS AND HOW DOES IT WORK?

Grid-interactive Electric Thermal Storage (GETS) is the integration of intelligent and real time control signals with enhanced electric thermal storage (ETS) space and water heaters. GETS space and water heaters are “Thermal Batteries” that store electricity as heat in dense ceramic bricks inside the heater or as heated water. Larger capacity electric water heaters are used to increase the energy storage capacity and provide additional regulation ability. Energy is stored during preferential times of the day or night or as dictated by the needs of the grid. Delivery of energy from the ETS systems occurs as needed to maintain consumer comfort. GETS space and water heaters interface with signals from the power company, ISO or other source and quickly respond by shedding load

or by taking on additional energy as dictated by the control signal. Since space and water heaters are a significant year-round energy load in homes, these systems when combined with smart control (grid-interactive) provide utilities a great tool for managing and regulating sources of power supply, transmission and distribution while optimizing both economic and environmental benefits for the utility and consumer.

GETS space and water heaters are distributive energy storage devices that when aggregated, are very powerful, effective and affordable tools for grid management. There are various configurations of GETS products available for residential and commercial applications. All of these units have the ability to respond to smart control signals as well as a time clock, legacy load management relays, or other utility signals and provide precise, dependable, predictable and verifiable “Up” and “Down” dispatchable load while delivering great comfort to the consumer.

Equipment Description

ETS Room Unit(s)

ETS room space heaters are available in multiple model sizes ranging from 2.4kW to 10.8kW inputs and storage capacities from 13.5kWh to 40.5kWh.

ETS Central Systems – Residential Forced Air Furnace and Hydronic Heating Units (Comfort Plus)

ETS whole house systems are available in model sizes ranging from 19kW to 45.6kW inputs and storage capacities from 120kWh to 240kWh. They interface nicely with air source heat pumps (ASHP’s) to provide comfort modulation, supplemental backup heat and improved operating efficiency.

ETS Commercial Systems – Forced Air and Hydronic (ThermElect)

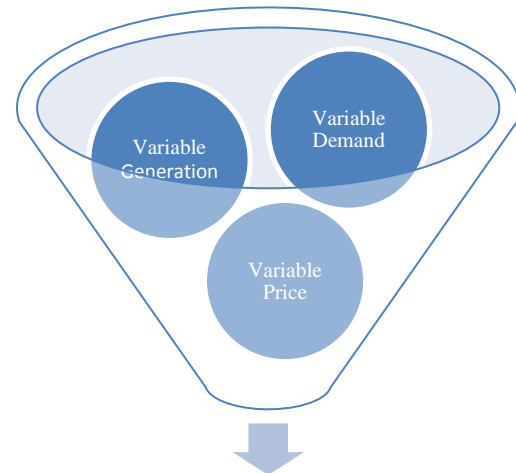
ETS commercial units range in size from 53kW to 160kW inputs and storage capacities from 320kWh to 960kWh.

Interactive Water Heater Control

Steffes Interactive Water Heater Controls (IWHC) are installed on domestic electric water heaters. The IWHC has the ability to accept a signal from a utility control switch or other smart signaling devices. This control enables the water heater to become a powerful year-round storage device by providing variable, up or down regulation in response to the needs of the grid.

The IWHC regulates heat storage, dependent upon power availability, while insuring comfort for the consumer at all times. It can be installed on most standard electric water heaters and is most beneficial when installed on larger size models, such as the 85 or 105 gallon, to provide additional energy storage.

BALANCING GRID VARIABLES WITH “SMART” GRID-INTERACTIVE ETS (GETS)



Manage with Grid-interactive
Electric Thermal Storage

1. *Maintaining balance, stabilization and reliability with GETS*

Grid operators are continuously monitoring generation resources and consumer demand in order to maintain balance and stability on the electric grid. Generation resources are increased or decreased in response to increases and decreases of consumer demand. Often times, these traditional ways of providing balancing services are slower and less efficient than Grid-interactive Electric Thermal Storage (GETS). With increasing amounts of new variable renewable power generation, there is a growing need and value for fast acting regulation resources.

GETS space and water heaters have smart controls that quickly and precisely change their charge rate and charge level, factoring in real-time generation and other critical needs of the grid. This also allows these space and water heaters to be fast acting, non-fuel-consuming regulators and frequency controllers. It provides increased grid reliability, reduces power plant cycling and fuel consumed for regulation and brings significant monetary and environmental value to electric grid operators, electric utilities and consumers.

GETS products allow the charging patterns of GETS-enabled space and water heating loads to be dispatched so as to follow a precise desired utility load shape. This load shape can be set the day prior and then altered hourly and again every few minutes or seconds if advantageous to meet the real-time needs of the grid.

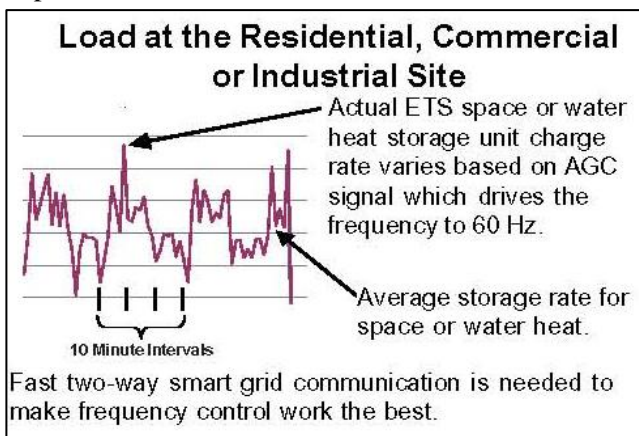
Key benefits include:

- *Dynamically couple consumer electricity usage to real-time needs of the electric grid*
- *Cost effectively deliver assets that assist in grid reliability, stabilization, and optimization*
- *Track a desired utility load shape in real time*
- *Precisely, dependably, predictably and verifiably provide fast “Up” and “Down” dispatchable load*

Frequency Control

Area Control Error (ACE) is a number which indicates the difference between supply and demand of electricity. The fluctuation in supply and demand makes power frequency go high or low.

Grid-interactive Electric Thermal Storage (GETS) space and water heaters can be used as a fast regulation tool to respond to an Automatic Generation Control (AGC) signal, thus reducing generator fuel consumption and associated emissions. This yields monetary ancillary payments or reduced cost of regulation for utilities. In addition, grid reliability is improved.

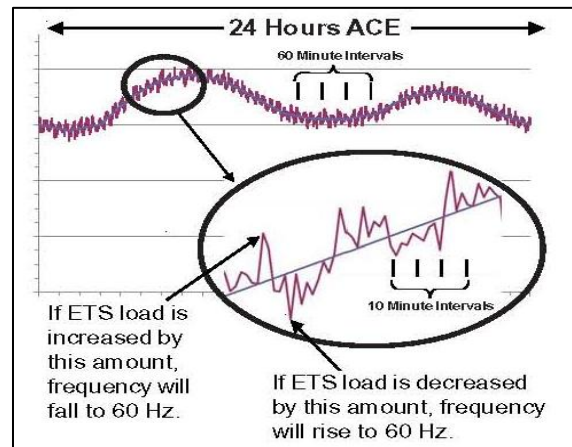


Example

If you set the average charge rate of a group of water heaters to 1Mw for the hour ending at 4AM, the actual

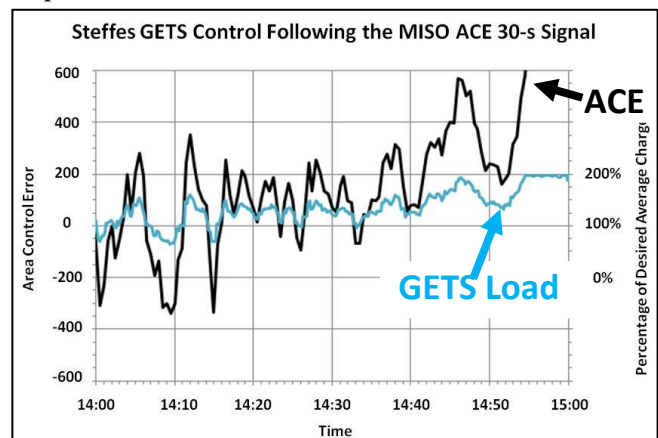
charge rate of this block of GETS space or water heaters can change quickly as dictated by the automatic generation control (AGC) signal to be anywhere between 0MW and 2MW. This provides precise, predictable and verifiable “up” and “down” regulation for ancillary value and carbon reduction.

PJM ISO has a need for about 700MW of up and down regulation. As more variable renewable generation is added, more regulation will be needed. All ISO’s have a market structure to compensate for regulation. Utilities that do load balancing on their own have associated costs that can also be reduced.



Example of MISO Smart Signal Following

The Midwest ISO (MISO) has an Area Control Error (ACE) signal that indicates the instantaneous difference between net actual and scheduled interchange. When the ACE signal is positive, it indicates that generation exceeds demand and when the ACE signal is negative, it indicates that demand exceeds generation. Grid-interactive space and water heater controls can respond to the AGC signal to add load when the ACE goes high and shed load when it goes low. The following graph shows how GETS responds to ACE.



2. Improving System Efficiency and Environmental Value

There is great environmental value for doing power regulation with a non-fuel consuming resource. KEMA Incorporated conducted an evaluation and comparison for doing regulation with a fast response system versus using conventional fossil fuel generation system (KEMA Project: BPCC.0003.001)¹. The Oakridge National Laboratory also conducted a study of this (ORNL, ORNL/TM-2004/291)². Refer to the table below which shows the emissions savings for doing regulation with a flywheel on the PJM network. You will notice a carbon savings of up to 67%. Like flywheels, GETS space and water heaters can provide non-fuel consuming regulation for utilities and reduce power plant cycling thereby increasing system efficiency. This adds a new dimension of conservation, reliability and efficiency to the electric grid. It is commonly agreed that fast acting regulation devices are several times more effective at performing frequency control and therefore “pay for performance” pricing is being implemented and offered by ISO/RTO’s. GETS products can provide fast regulation services which allows for the movement of a greater amount of power in a shorter period of time than other slower responding, less efficient balancing resources.

Key benefit:

- **Improved system efficiency by reducing fuel used to increase or decrease frequency as needed for grid stability**

or other generation resources cannot change as fast as the wind or solar, significant amounts of this carbon-free resource are wasted. A growing amount of this variable resource is curtailed or unusable because it cannot be consumed when it is generated. This variability must be carefully integrated with other generation sources to maintain grid stability.

The inability to integrate renewable energy into the grid can happen at any hour of the day. GETS space and water heater loads can adjust their charge rate and change as fast as wind and other renewable generation, allowing more renewable energy to be fully-integrated into the grid. The ability to quickly adjust a GETS space or water heater charge rate up or down can provide significant value to fully-utilize renewable energy. GETS control provides better integration of renewable energy into the grid, brings a new dimension of system conservation and efficiency and keeps electric rates low.

This ability to track and use real-time renewable generation and monitor and react to other critical needs of the grid can significantly decrease the carbon footprint for space and water heating **and** lower the cost of operation for consumers.

Key benefits include:

- **Scalable integration of a higher percentage of renewable energy on the grid**
- **Store terawatt hours of electric energy with a low cost storage resource**

Example - Balancing Reserves Deployment Signal Following Renewables

The Bonneville Power Authority (BPA) has identified a great need to integrate large amounts of renewable energy into their grid. BPA provides a Balancing Reserves Deployment (BRD) signal that is used to balance renewable energy resources, base load generation and demand variations. The BRD signal is the difference between predicted wind and actual wind generation in the area. When the BRD signal is positive, it indicates that generation needs to be increased to balance the grid (Up Regulation) and when the signal is negative, it indicates that generation needs to be decreased to balance the grid (Down Regulation). GETS water heaters can use this signal

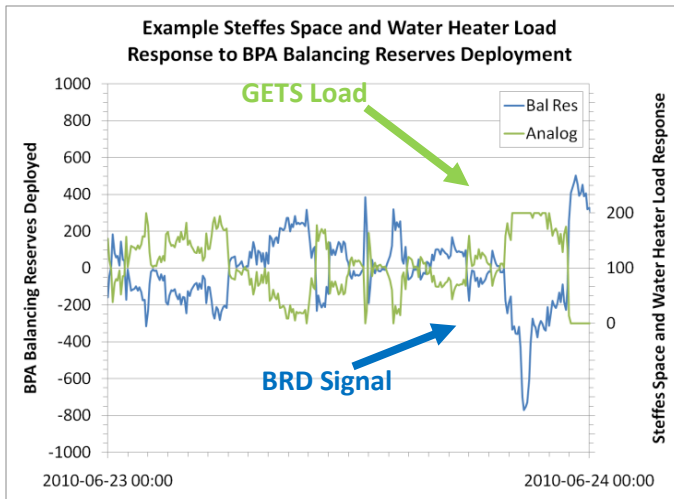
Emissions Comparison for PJM					
Flywheel Emission Savings in Tons, Over 20-year Life: PJM					
	Coal		Natural Gas		Pumped Hydro
	Baseload	Peaker	Baseload	Peaker	
CO2					
Flywheel	107,902	107,902	107,902	107,902	107,902
Alternate Gen.	331,879	626,477	172,680	187,822	175,189
Savings (Flywheel)	223,978	518,576	64,779	79,920	67,287
Percent Savings	67%	83%	38%	43%	38%

3. Integrating Variable Renewable Generation

Renewable energy is recognized as the “green” or environmentally-friendly energy solution. Many states have adopted aggressive renewable portfolio standards (RPS) in an attempt to shift power generation away from fossil fuel generation sources. Most of this new generation will come from wind or solar. When load

to shed load when the signal goes high and add load when it goes low.

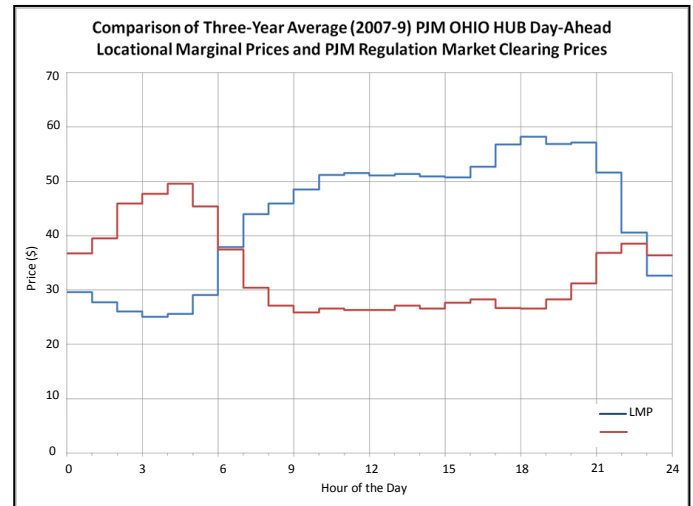
The following graph shows the GETS load responding to the BPA Balancing Reserve Deployment signal.



4. Economic Value – Regulation Services, LMP and other Optimization

In addition to providing grid reliability and environmental benefits, there are significant economic benefits of doing fast regulation with GETS space and water heaters. During hours when the demand for electricity is low, the associated market price (or LMP price) is also low. It is during this off-peak time that the need and value for doing regulation is the greatest. **Refer to the graph** which follows. This shows a 3-year average of LMP prices and the regulation market clearing price (RMCP) for PJM, an ISO located in the Northeast of the United States. This confirms that when LMP is lower, the RMCP is higher. During hours when RMCP is equal to LMP, smart controlled grid-interactive electric storage space and water heaters can provide regulation services that are equal in value to the energy needed to charge them or have a net wholesale operating cost of zero. When RMCP is greater than LMP, the net cost of operation is negative. As you will see, in the middle of the night, the 3 year average RMCP is greater than LMP, so the net wholesale cost of operation of a smart grid electric water heater during this time period is negative. In the PJM region, the annual wholesale energy cost for having a GETS water heater under control for Regulation and LMP Optimization is **-\$80 per year** (negative). This is in addition to the carbon savings associated with doing regulation with a non-carbon

emitting resource (refer to emission comparison information in the prior section). See table which follows cost comparison:

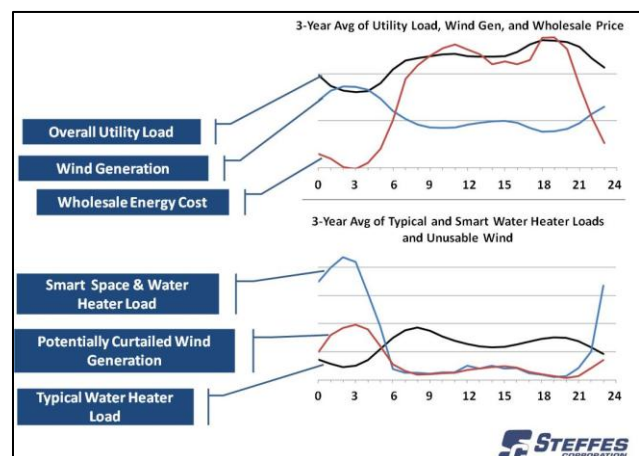


Electric Water Heater Control Comparison

Type/Method	Energy Cost	Demand/Trans. Other Costs	Total Cost
Uncontrolled	\$256	\$50 - \$200	\$306 - \$456
Grid-Interactive LMP Optimized	\$108	0	\$108
Grid-Interactive w/LMP Op. and Regulation	-\$80	0	-\$80

PUTTING IT ALL TOGETHER

- The annual average overall utility load is low in the middle of the night.
- The average annual wind generation is highest in the middle of the night, almost the exact opposite of overall load.
- The wholesale energy price is lowest in the middle of the night.
- Most unusable wind is in the middle of the night.
- Unfortunately, the typical consumer load is also lowest in the middle of the night.



GETS space and water heaters are fast “Up” and “Down” regulation tools that provide grid stability and integrate renewable energy. At the same time, they bring economic value to the consumer, utility, ISO and other stakeholders. GETS load can continually change in real-time based on the current output of renewable energy source, LMP, and other needs of the grid.

It is clear that fast-acting electric energy storage can cost effectively manage the variability while maintaining grid stability and reliability. Furthermore, Grid-interactive Electric Thermal Storage space and water heaters can fill a significant portion of our nation’s electric energy storage need at a fraction of the cost of other technologies. GETS can also be a valuable, carbon reduction component of the Smart Grid and other clean energy initiatives in the future. In order to achieve a low-carbon economy, we must encourage the use and development of innovative products and technologies like GETS that have the potential of getting us there.

CONCLUSION

In a perfect world, there would be no fluctuation of energy consumption, power generation and prices. Everything would be well-defined and very predictable. In the real world, there is much variability and uncertainty. Maintaining grid balance and stability with the variability of consumer demand, unpredictable grid events and variable generation from renewables is increasingly challenging. GETS space and water heaters provide precise, dependable, predictable and verifiable “up” and “down” dispatchable load to help with grid management. In addition, with a smart communication signal going to the GETS systems every few minutes or seconds, the hourly average load can be adjusted up or down in real-time for low-carbon, fast regulation and integration of higher percentages of variable renewable energy. The GETS metering system verifies operational accuracy, communication and response exchanges. When aggregated, a GETS space or water heater can deliver predictable and verifiable regulation services that can be equal to, or in some cases greater than, the annual wholesale cost of the electricity it consumes. Grid-interactive Electric Thermal Storage space and water heaters are great tools for utilities and consumers to use for managing our energy future.

REFERENCES

- 1 KEMA Project: BPCC.0003.001 - Emissions Comparison for a 20 MW Flywheel-based Frequency Regulation Power Plant http://www.beaconpower.com/files/KEMA_Report_Emissions_Comparisons_July_%202007.pdf
- 2 ORNL, ORNL/TM-2004/291, “Frequency Regulation Basics and Trends”, Brendan J Kirby December 2004; accessed on August 3, 2011 at <http://www.ornl.gov/~webworks/cpr/y2001/rpt/122302.pdf>

ABOUT THE AUTHOR



Paul Steffes P.E. is the CEO of Steffes Corporation based in Dickinson North Dakota. Steffes Corporation is a North American manufacturer of Electric Thermal Storage products for residential and commercial applications. Paul has worked closely with power companies from across North America for the past 25 years, successfully applying ETS products and solutions within Utility load management and demand response programs.

Paul’s current work is focused on applying Grid-interactive Electric Thermal Storage (GETS) systems as a “Thermal Battery”, to provide “up” and “down” fast regulation services and assisting in integrating large amounts of renewable energy. This is in addition to traditional load management and consulting services.

Paul is a Professional Engineer and is nationally recognized by many Investor Owned, Municipal, and Rural Electric Cooperative power companies as an expert in ETS and GETS technology. He is frequently called upon to provide insight and expertise to the electric industry. Paul is a charter member of the Smart Grid Inter-Operability Panel.

